

# MAN L23/30S



Bore 225 mm, Stroke 300 mm		5L23/30S			6L23/30S			7L23/30S			8L23/30S		
Engine speed	rpm	750	720	750	720	900	750	720	900	750	720	900	
Frequency	Hz	50	60	50	60	60	50	60	60	50	60	60	
Engine power	kW	740	710	888	852	1,050	1,036	994	1,225	1,184	1,136	1,400	
Electr. GenSet power	kW	703	675	844	809	998	984	944	1,164	1,125	1,079	1,330	

## Electr. GenSet Heat Rate at 100% load

Liquid fuel (WB2007/2008) kJ/kWh 8,585 8,630 8,585 8,630 8,675 8,585 8,630 8,675 8,585 8,630 8,675

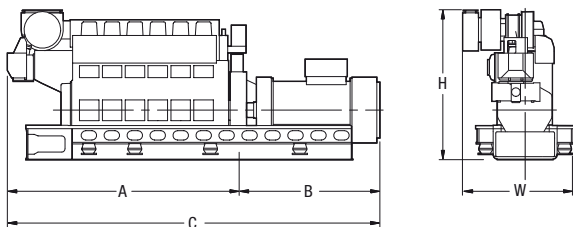
Lube Oil Consumption kg/h 0.4-0.7 0.5-1.0 0.6-1.2 0.7-1.4

Nominal generator efficiency 95%

## GenSet Dimensions

Cyl. No.		5	6	6	7	7	8	8
	r/min	720/750	720/750	900	720/750	900	720/750	900
A	mm	3,369	3,738	3,738	4,109	4,109	4,475	4,475
B	mm	2,155	2,265	2,265	2,395	2,395	2,480	2,340
C	mm	5,524	6,004	6,004	6,504	6,504	6,959	6,815
W	mm	1,690	1,690	1,768	1,715	1,888	1,715	1,888
H	mm	2,402	2,402	2,466	2,466	2,466	2,466	2,466
Dry mass	t	17	18.5	19.8	20	21.4	21.9	22.9

Weights and dimensions are subject to final application



Note: The above dimension: only reference.

The final dimensions are determined by the type of generator.

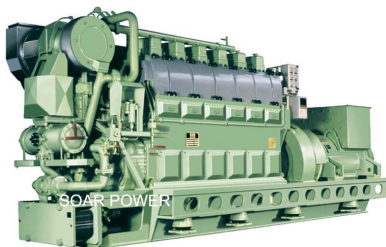
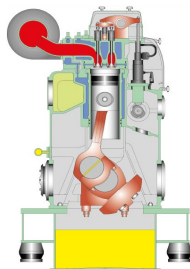
\*Based on nominal generator efficiencies of 95%.



# L23/30S

WB 2007  
WB 2008

Configuration:	In-line
Bore:	225mm
Stroke:	300 mm
Speed:	720/750/900 rpm
Piston speed:	7.2/7.5/9m/sec
Mean eff.press.:	18.2/18.1/17.9bar
Max.combust.press.:	130 bar
Fuel quality:	Liquid Biofuel



URL: <http://www.soar.hk>

E-mail: [sale@soar.hk](mailto:sale@soar.hk)

Phone: +86-4008111308