

MAN L28/32S



Bore: 280 mm, Stroke: 320 mm

Speed	r/min	750		720	
Frequency	Hz	50		60	
		Eng. kW	Gen. kW*	Eng. kW	Gen. kW*
5L28/32S		1,100	1,045	1,050	1,000
6L28/32S		1,320	1,255	1,260	1,200
7L28/32S		1,540	1,465	1,470	1,400
8L28/32S		1,760	1,670	1,680	1,600
9L28/32S		1,980	1,880	1,890	1,800

Electr. GenSet Heat Rate at 100% Load

Cyl. No.		5L		6L		7L		8L		9L	
Liquid fuel (WB2007/2008)	kJ/kWh	8,549	8,518	8,549	8,518	8,549	8,518	8,549	8,518	8,549	8,518

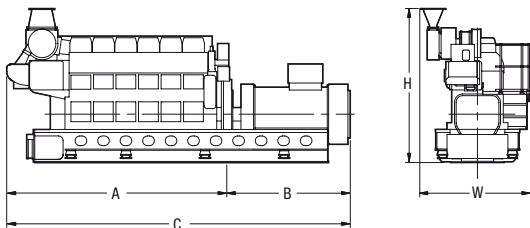
Lube Oil Consumption	kg/h	0.7-1.1	0.8-1.3	0.9-1.5	1.0-1.8	1.2-2.0
----------------------	------	---------	---------	---------	---------	---------

Nominal generator efficiency 95%

GenSet Dimensions

Cyl. No.		5L	6L	7L	8L	9L
A	mm	4,279	4,759	5,499	5,979	6,199
B	mm	2,400	2,510	2,680	2,770	2,690
C	mm	6,679	7,269	8,179	8,749	8,889
W	mm	2,370	2,370	2,390	2,419	2,489
H	mm	2,684	2,684	2,874	2,874	3,034
Dry mass	t	32.6	36.3	39.4	40.7	47.1

Weights and dimensions are subject to final application



Note: The above dimension: only reference.

The final dimensions are determined by the type of generator.

*Based on nominal generator efficiencies of 95%.



L28/32S

WB 2007
WB 2008

Configuration: In-line

Bore: 280mm

Stroke: 320 mm

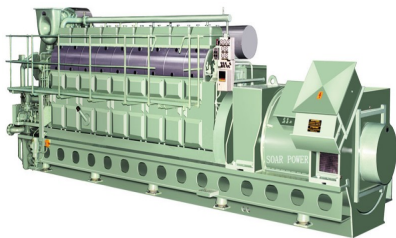
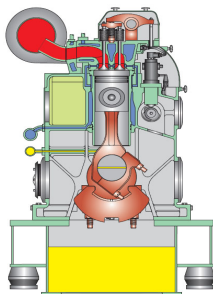
Speed: 720/750 rpm

Piston speed: 7.7/8.0 m/sec

Mean eff.press.: 17.8/17.9bar

Max.combust.press.: 130 bar

Fuel quality: Liquid Biofuel



URL: <http://www.soar.hk>

E-mail: sale@soar.hk

Phone: +86-4008111308