

# MAN L16/24S



**Bore: 160 mm, Stroke: 240 mm**

Speed	r/min	1,000		1,200	
Frequency	Hz	50		60	
		Eng. kW	Gen. kW*	Eng. kW	Gen. kW*
5L16/24S		450	428	500	475
6L16/24S		570	542	660	627
7L16/24S		665	638	770	732
8L16/24S		760	722	880	836
9L16/24S		855	812	990	941

### Electr. GenSet Heat Rate at 100% Load

Cyl. No.		5L		6L		7L		8L		9L	
Liquid fuel (WB2007/2008)	kJ/kWh	8,765	8,585	8,765	8,585	8,765	8,585	8,765	8,585	8,765	8,585

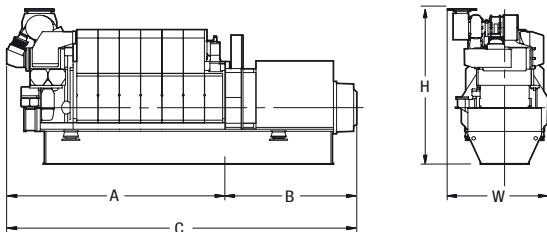
<b>Lube Oil Consumption</b>	kg/h	0.2-0.4		0.2-0.5		0.3-0.6		0.3-0.7		0.3-0.8	
-----------------------------	------	---------	--	---------	--	---------	--	---------	--	---------	--

Nominal generator efficiency 95%

### GenSet Dimensions

Cyl. No.		5L	6L	7L	8L	9L
A	mm	2,807	3,082	3,557	3,832	4,107
B	mm	1,400	1,490	1,585	1,680	1,680
C	mm	4,207	4,572	5,142	5,512	5,787
W	mm	1,464	1,464	1,478	1,478	1,478
H	mm	2,337	2,337	2,415/2,337	2,415	2,415
Dry mass	t	9.8	10.5	12.0	13.7	14.5

Weights and dimensions are subject to final application



Note: The above dimension: only reference.

The final dimensions are determined by the type of generator.

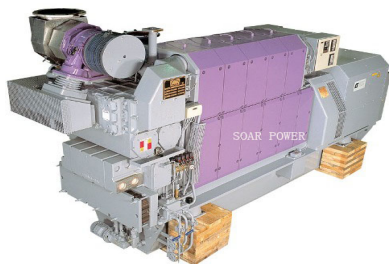
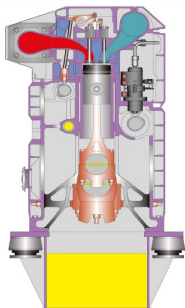
\*Based on nominal generator efficiencies of 95%.



# MAN L16/24S

WB 2007  
WB 2008

Configuration: In-line  
Bore: 160 mm  
Stroke: 240 mm  
Speed: 1000/1200 rpm  
Piston speed: 8/9.6m/sec  
Mean eff.press.:  
5 cyl.engine: 22.4/20.7 bar  
6,7,8,9 cyl.engine: 23.6/22.8bar  
Max.combust.press.: 170bar  
Fuel quality: ISO RMK700



URL: <http://www.soar.hk>  
E-mail: [sale@soar.hk](mailto:sale@soar.hk)  
Phone: +86-4008111308