

MAN L28/32S-DF



Bore 280 mm, Stroke 320 mm		5L		6L		7L		8L		9L	
Engine speed	rpm	750	720	750	720	750	720	750	720	750	720
Frequency	Hz	50	60	50	60	50	60	50	60	50	60
Electr. GenSet power	kW	960	960	1,152	1,152	1,344	1,344	1,552	1,552	1,746	1,746

Electr. GenSet Heat Rate at 100% Load

Gas fuel (WB1998)	kJ/kWh	9,168	9,168	9,168	9,168	9,168	9,168	9,073	9,073	9,073	9,073
-------------------	--------	-------	-------	-------	-------	-------	-------	-------	-------	-------	-------

Tolerance +10%. Please note that the additions to fuel consumption must be considered before the tolerance is taken into account.

WB2007/2008 on request.

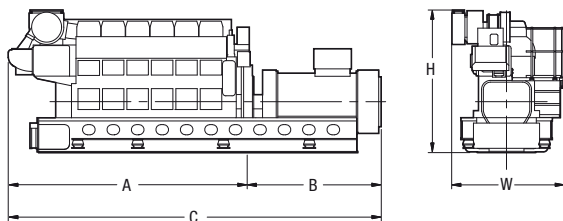
Lube Oil Consumption	kg/h	0.6-1.0	0.7-1.2	0.8-1.4	1.0-1.6	1.0-1.8
----------------------	------	---------	---------	---------	---------	---------

Nominal generator efficiency is 96% for 5L,6L,7L and 97% for 8L,9L

GenSet Dimensions

A	mm	4,321	4,801	5,281	5,761	6,241
B	mm	2,400	2,510	2,680	2,770	2,690
C	mm	6,721	7,311	7,961	8,531	8,931
W	mm	2,463	2,463	2,463	2,463	2,463
H	mm	2,835	3,009	3,009	3,009	3,009
Dry mass	t	32.6	36.3	39.4	40.7	47.1

Weights and dimensions are subject to final application



Note: The above dimension: only reference.

The final dimensions are determined by the type of generator.



L28/32S-DF

WB 1998

WB 2007

WB 2008

Configuration: In-line

Bore: 280mm

Stroke: 320 mm

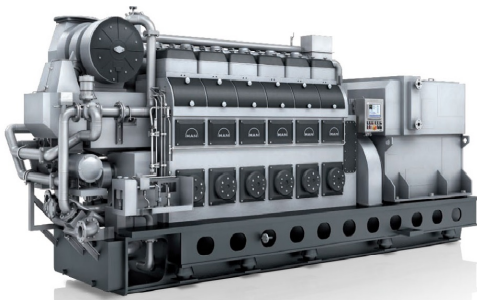
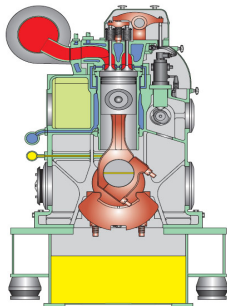
Cylinder Output: 200kWm

Speed: 720/750 rpm

Piston speed: 7.7/8.0 m/sec

Mean eff.press.: 17.8/17.9bar

Max.combust.press.: 130 bar



URL: <http://www.soar.hk>

E-mail: sale@soar.hk

Phone: +86-4008111308

新奥集团
SOAR GROUP