

MAN L32/40



Bore: 320 mm, Stroke: 400 mm

	Speed r/min	750		720	
		Frequency Hz		60	
		Eng. kW	Gen. kW*	Eng. kW	Gen. kW*
6L32/40		3,000	2,910	3,000	2,910
7L32/40		3,500	3,395	3,500	3,395
8L32/40		4,000	3,880	4,000	3,880
9L32/40		4,500	4,365	4,500	4,365

Electr. GenSet Heat Rate at 100% Load

Cyl. No.	6	7	8	9
Liquid fuel (WB2007/2008) kJ/kWh	7,643/7,879	7,643/7,879	7,643/7,879	7,643/7,879

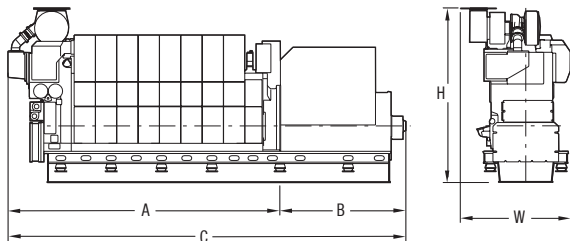
Lube Oil Consumption	kg/h	1.8	2.1	2.4	2.7
----------------------	------	-----	-----	-----	-----

Nominal generator efficiency is 97%.

GenSet Dimensions

Cyl. No.	r/min	6	7	8	9
		720/750	720/750	720/750	720/750
A	mm	6,340	6,870	7,400	7,930
B	mm	3,415	3,415	3,635	3,635
C	mm	9,755	10,285	11,035	11,565
W	mm	2,630	2,630	2,715	2,715
H	mm	4,622	4,622	4,840	4,840
Dry Mass	t	75.0	79.0	87.0	91.0

Weights and dimensions are subject to final application



Note: The above dimension: only reference.

The final dimensions are determined by the type of generator.

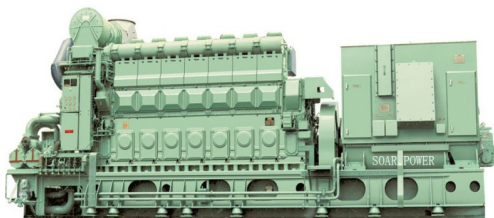
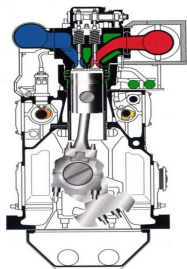
*Based on nominal generator efficiencies of 97%.



L32/40

WB 2007 / WB 2008

- Configuration: In-line
- Bore: 320mm
- Stroke: 400 mm
- Speed: 720/750 rpm
- Cylinder rating: 500kW
- Mean Piston speed: 9.6/10.m/sec
- Mean eff.press.: 25.9/24.9bar
- Max.combust.press.: 190bar
- Fuel quality: ISO RMK700



URL: <http://www.soar.hk>
E-mail: sale@soar.hk
Phone: +86-4008111308