

## MAN V32/40


**Bore: 320 mm, Stroke: 400 mm**

Speed	r/min	750	720
mep	bar	24.9	25.9
		kW	kW
12V32/40		6,000	6,000
14V32/40		7,000	7,000
16V32/40		8,000	8,000
18V32/40		9,000	9,000

**Specific Fuel Oil Consumption (SFOC) to ISO conditions**

MCR	100%	85%
V32/40	184 g/kWh	182 g/kWh
V32/40 FPP	187 g/kWh	183 g/kWh

Specific lube oil consumption 0.5 g/kWh

Engine type specific reference charge air temperature before cylinder 43 °C

**Dimensions**

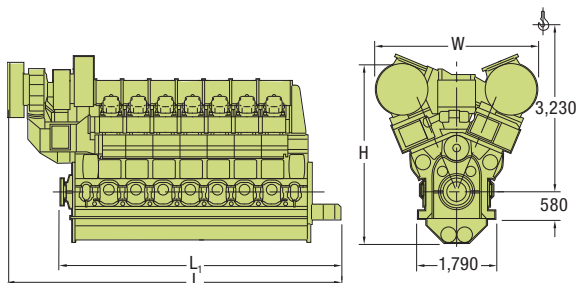
Cyl. No.		12	14	16	18
L	mm	6,915	7,545	8,365	8,995
L <sub>1</sub>	mm	5,890	6,520	7,150	7,780
W	mm	3,140	3,140	3,730	3,730
H	mm	4,100	4,100	4,420	4,420
Dry mass	t	61	68	77	85

Minimum centreline distance for twin engine installation: 4,000 mm

Speed 720 r/min for generator drive/constant speed operation only

Fixed Pitch Propeller: 450 kW/cyl, 750 r/min

V32/40 as marine main engine to be applied for multi engine plants only



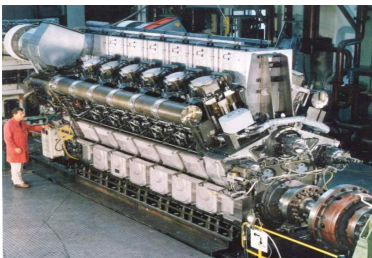


# V32/40

## Main Data

Number of cylinder		12,14,16,18
Rated power(MCR)	kW/cyl	500
Rated speed	rpm	720/750
Idle speed	rpm	450
Bore	mm	320
Stroke	mm	400
Cylinder distance	mm	530
Mean piston speed	m/s	9.6/10
Mean eff.Pressure(MEP)	bar	24.9/25.9
Compression ratio		14.5
Displacement/cylinder	L	32.17
Max.combustion pressure	bar	190
Fuel oil acceptance		MDO,HFO
Injection viscosity	cSt	Max.14

*\*ISO ambient condition IS Tolerance 5%.  
Fuel oil with lower calorific value of 42700 kJ/kg  
Without engine-driven pumps;  
Addition for engine-driven pumps;  
1.5%(3g/kWh)for sea water pump.  
0.7%(1.4g/kWh)for fresh water pump.  
\*\*For guidance only.*



URL: <http://www.soar.hk>

E-mail: [sale@soar.hk](mailto:sale@soar.hk)

Phone: +86-4008111308