

## MAN V48/60B


**Bore: 480 mm, Stroke: 600 mm**

|           |       |        |        |
|-----------|-------|--------|--------|
| Speed     | r/min | 514    | 500    |
| mep       | bar   | 24.7   | 25.4   |
|           |       | kW     | kW     |
| 12V48/60B |       | 13,800 | 13,800 |
| 14V48/60B |       | 16,100 | 16,100 |
| 16V48/60B |       | 18,400 | 18,400 |
| 18V48/60B |       | 20,700 | 20,700 |

**Specific Fuel Oil Consumption (SFOC) to ISO conditions**

|         |           |           |
|---------|-----------|-----------|
| MCR     | 100%      | 85%       |
| V48/60B | 184 g/kWh | 182 g/kWh |

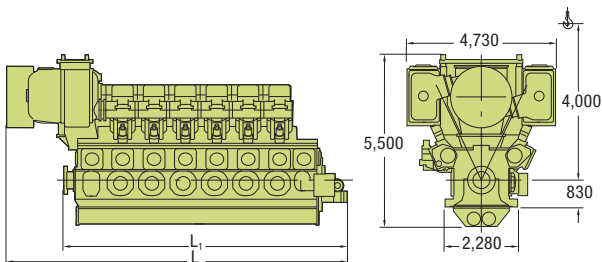
Specific lube oil consumption 0.6 g/kWh

Engine type specific reference charge air temperature before cylinder 34 °C

**Dimensions**

| Cyl. No.       |    | 12     | 14     | 16     | 18     |
|----------------|----|--------|--------|--------|--------|
| L              | mm | 10,790 | 11,790 | 13,140 | 14,140 |
| L <sub>1</sub> | mm | 9,088  | 10,088 | 11,088 | 12,088 |
| Dry mass       | t  | 186    | 209    | 240    | 259    |

Minimum centreline distance for twin engine installation: 4,800 mm





## MAN V48/60B

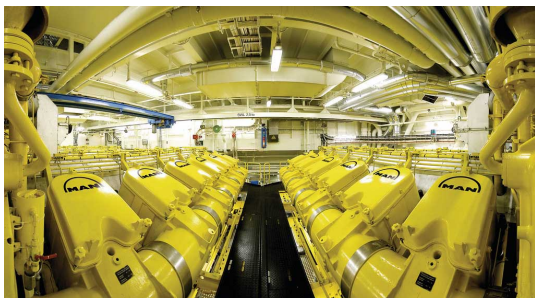
### 主要参数 Main Data

|                        |        |             |
|------------------------|--------|-------------|
| Number of cylinder     |        | 12,14,16,18 |
| Rated power(MCR)       | kW/cyl | 1150        |
| Rated speed            | rpm    | 514/500     |
| Bore                   | mm     | 480         |
| Stroke                 | mm     | 600         |
| Cylinder distance      | mm     | 1000        |
| Mean piston speed      | m/s    | 10.3/10     |
| Mean eff.Pressure(MEP) | bar    | 24.7/25.4   |
| Fuel oil acceptance    |        | MDO,HFO     |
| Injection viscosity    | cSt    | Max.14      |

*\*ISO ambient condition Tolerance 5%.*

*Fuel oil with lower calorific value of 42700 kJ/kg*

*Without engine-driven pumps*



URL: <http://www.soar.hk>

E-mail: [sale@soar.hk](mailto:sale@soar.hk)

Phone: +86-4008111308